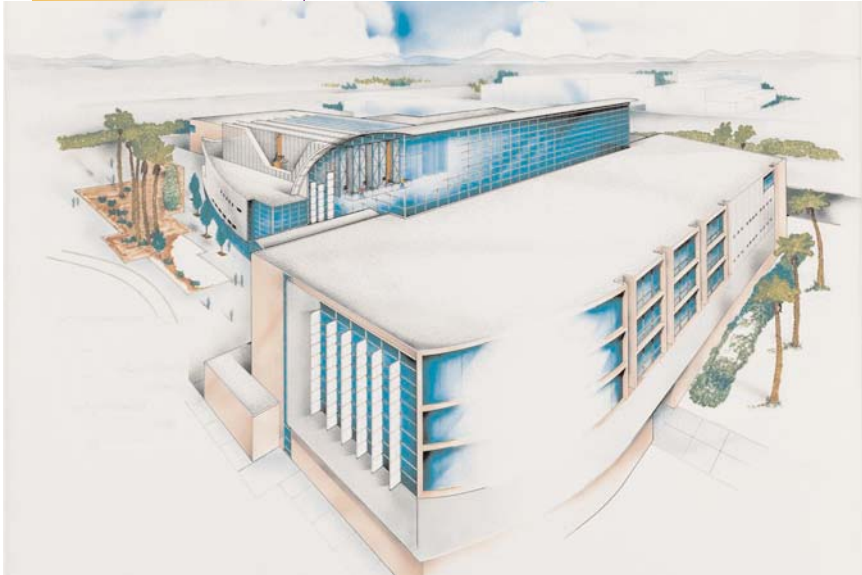


## 2-MINUTE OVERVIEW

# Automated Storage Improves Archived Material Access for Patrons



### Features/Benefits Provided:

- Reduced to 1/7 the required conventional shelving space
- Reduced stored material retrieval from 24 hours to less than 5 minutes
- Improved security to archived and popular publications
- Ensured humidity/temperature control

This library is a state-of-the-art facility in many ways. The new 300,000 square foot library includes 8,736 square feet for a fully automated handling system to house many of the most valuable and delicate volumes in its collection.

The automated storage and retrieval (AS/RS) system from their supplier provides secure storage, pinpoint on-hand accuracy, and fully automated service for some of this library's most prized collections.

When a specific volume is requested, the on-line library system sends a request to the supplier's computer, which searches its storage inventory for the requested materials. Then, the supplier's computer instructs one of the storage/retrieval machines (SRMs) to retrieve the appropriate storage bin. The bin is transported to a workstation at the front of the storage aisle where a library employee selects the requested book or materials. The patrons are able to pick up their desired materials at the circulation window.

*As a direct result of the space efficient AS/RS design, the cost of the building storage area was reduced from \$13 million to \$2.5 million.*

The base system provided 3 Mini-Load SRMs, with variable speed drives, single-deep bin extractor units, and on-board microprocessor control. The SRMs' extractors are designed to gently push and pull storage bins using handles built onto each side of each bin. This programmable motion ensures that care is taken when transporting the bins into and out of the storage locations. The SRMs deliver to and store from 3 ergonomically designed workstations.

The AS/RS is currently capable of storing 600,000 volumes with expansion capability to double this capacity.



**P.O. Box 1512  
Milwaukee, WI 53201-1512  
1.800.HKSystems  
hkinfo@hksystems.com  
www.hksystems.com**

Proud Member of the  
AS/RS Product  
Section of the  
Material Handling  
Industry